

41-172

PLAT NO. 12 EASTPOINTE SUBDIVISION

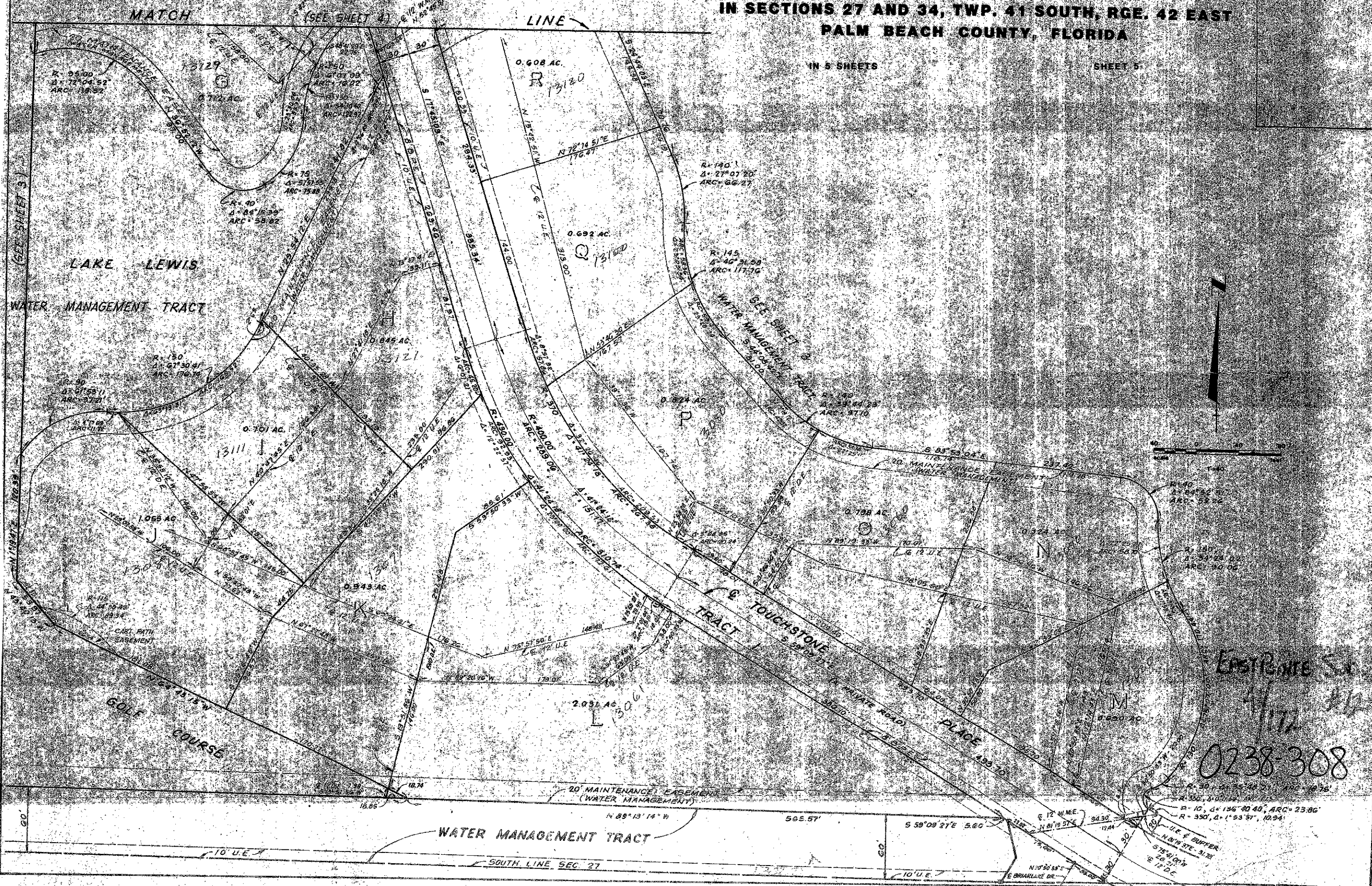
(A PLANNED UNIT DEVELOPMENT)

IN SECTIONS 27 AND 34, TWP. 41 SOUTH, RGE. 42 EAST PALM BEACH COUNTY, FLORIDA

172

IN 5 SHEETS

SHEET 5



Eastpointe Sub
41-172
0238-308